



# FRONT STREET PEDESTRIAN PLAZA

City Council Study Session

6/10/2025

---

# PRESENTATION OUTLINE

---

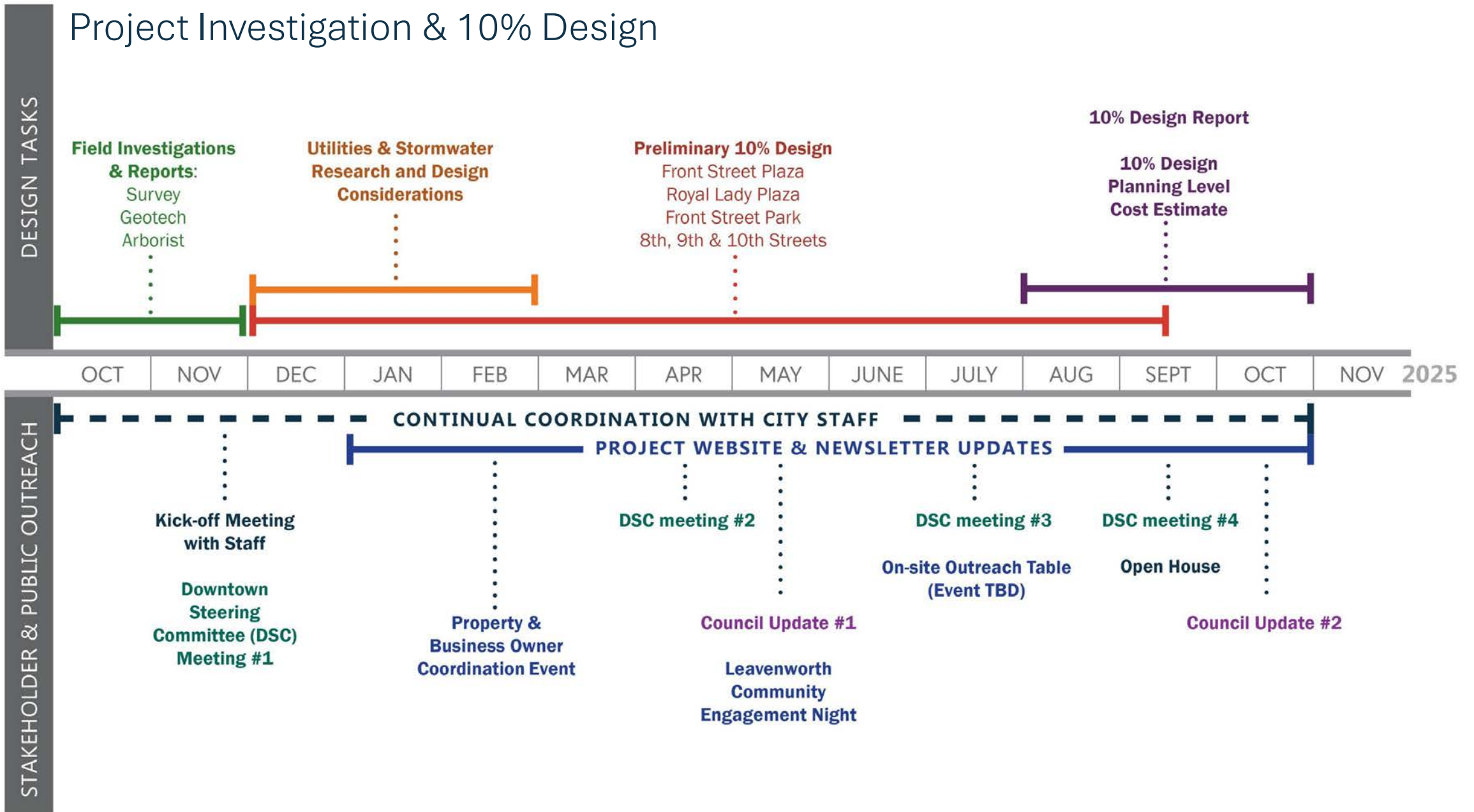
## Project Update:

- Scope and deliverables
- Schedule
- 10% design progress
- Stakeholder and Public Engagement
- Next steps
- Questions

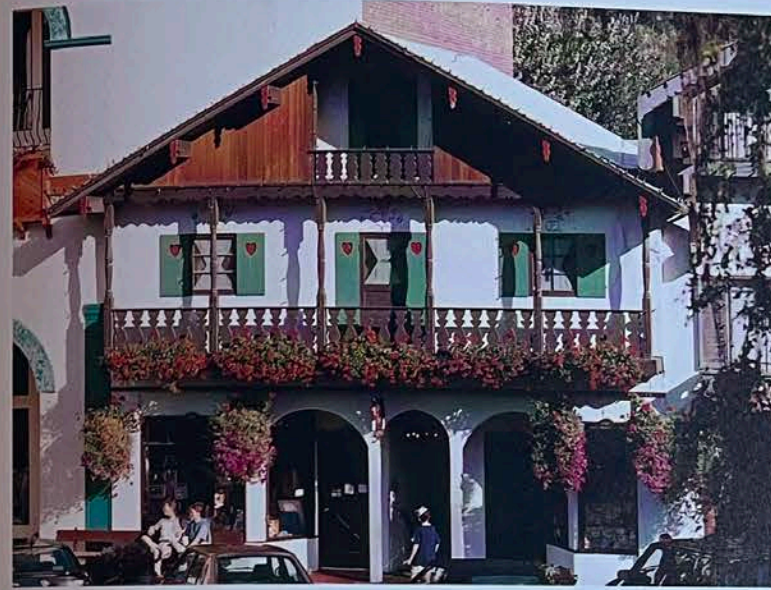
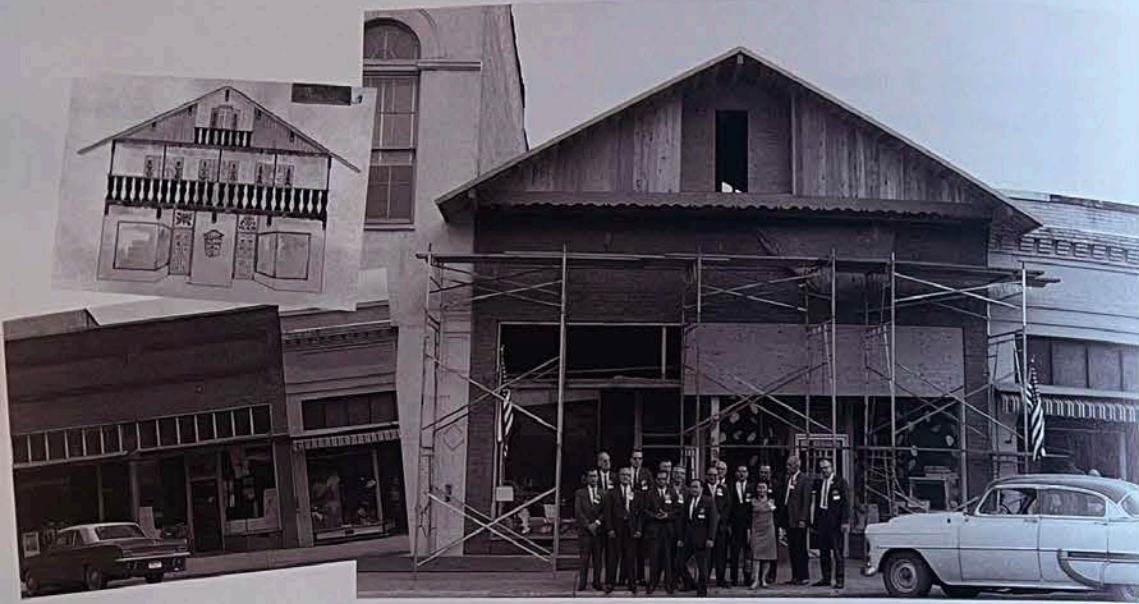


# PROJECT SCHEDULE

## Project Investigation & 10% Design



# LEAVENWORTH'S BOLD VISION MANIFESTED!



*The Alpen Haus  
Opposite page top, left to right,  
Heinz Ulbricht's original sketch  
for the Watson Electric Building  
and a photograph of the building  
before remodeling began in 1965.  
A visiting political group from  
Costa Rica poses in front of the  
building during reconstruction.  
This page, top. The Alpen Haus  
(Watson Building) as it looks  
today.*

*Opposite page below and this  
page below. LaVerne Peterson's  
Edelweiss Hotel (left) and Vern  
and Ann Herrett's two adjoining  
buildings, which today are Der  
Sportsman and the Europa Hotel.*



# THE MASTER PLAN HAS BEEN A HUGE SUCCESS!



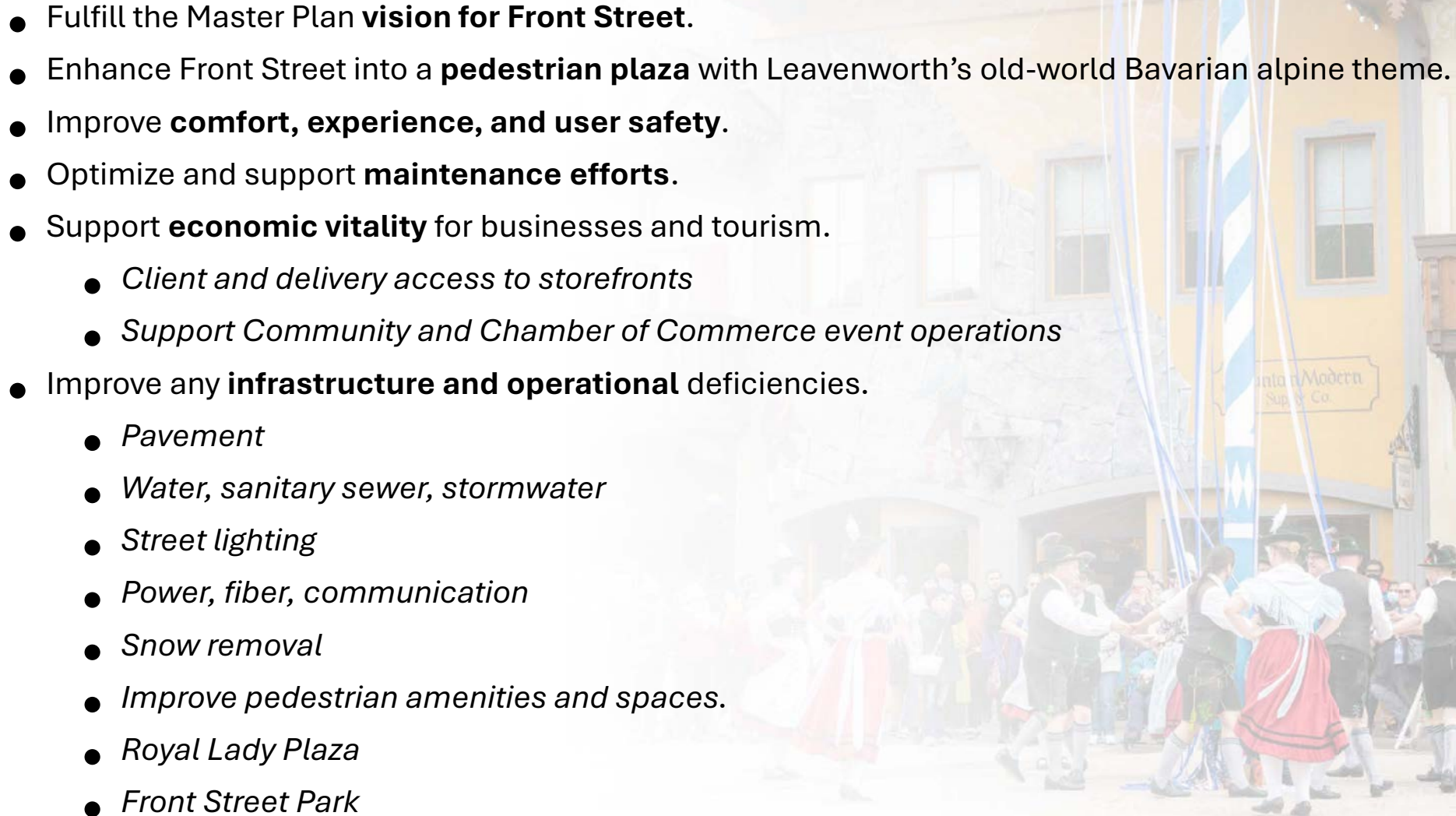
# STREET CLOSURE





---

# PROJECT GOALS

- Fulfill the Master Plan **vision for Front Street**.
  - Enhance Front Street into a **pedestrian plaza** with Leavenworth's old-world Bavarian alpine theme.
  - Improve **comfort, experience, and user safety**.
  - Optimize and support **maintenance efforts**.
  - Support **economic vitality** for businesses and tourism.
    - *Client and delivery access to storefronts*
    - *Support Community and Chamber of Commerce event operations*
  - Improve any **infrastructure and operational** deficiencies.
    - *Pavement*
    - *Water, sanitary sewer, stormwater*
    - *Street lighting*
    - *Power, fiber, communication*
    - *Snow removal*
    - *Improve pedestrian amenities and spaces.*
    - *Royal Lady Plaza*
    - *Front Street Park*
- 

# PROJECT AREA- SCOPE OF PEDESTRIAN PLAZA





# MASTER PLAN CONTEXT – MITTENWALD, BAVARIA



**Leavenworth's Front Street = Mittenwald's Obermarkt "plaza/pedestrian street"**



# SUCCESSFUL PLAZA DESIGN - CIRCULATION



# SUCCESSFUL PLAZA DESIGN - EDGES & LANDMARKS



# SUCCESSFUL PLAZA DESIGN - STREATERIES/SHOPS



# SUCCESSFUL PLAZA DESIGN – FEATURES



History & Culture – Expressed by Water Feature



History & Culture – Expressed by Statue



Art – Expressed by Sculpture



Time – Expressed by Pavement Treatments

# PROJECT AREA- SCOPE OF PEDESTRIAN PLAZA



# ROYAL LADY PLAZA - 10% DESIGN



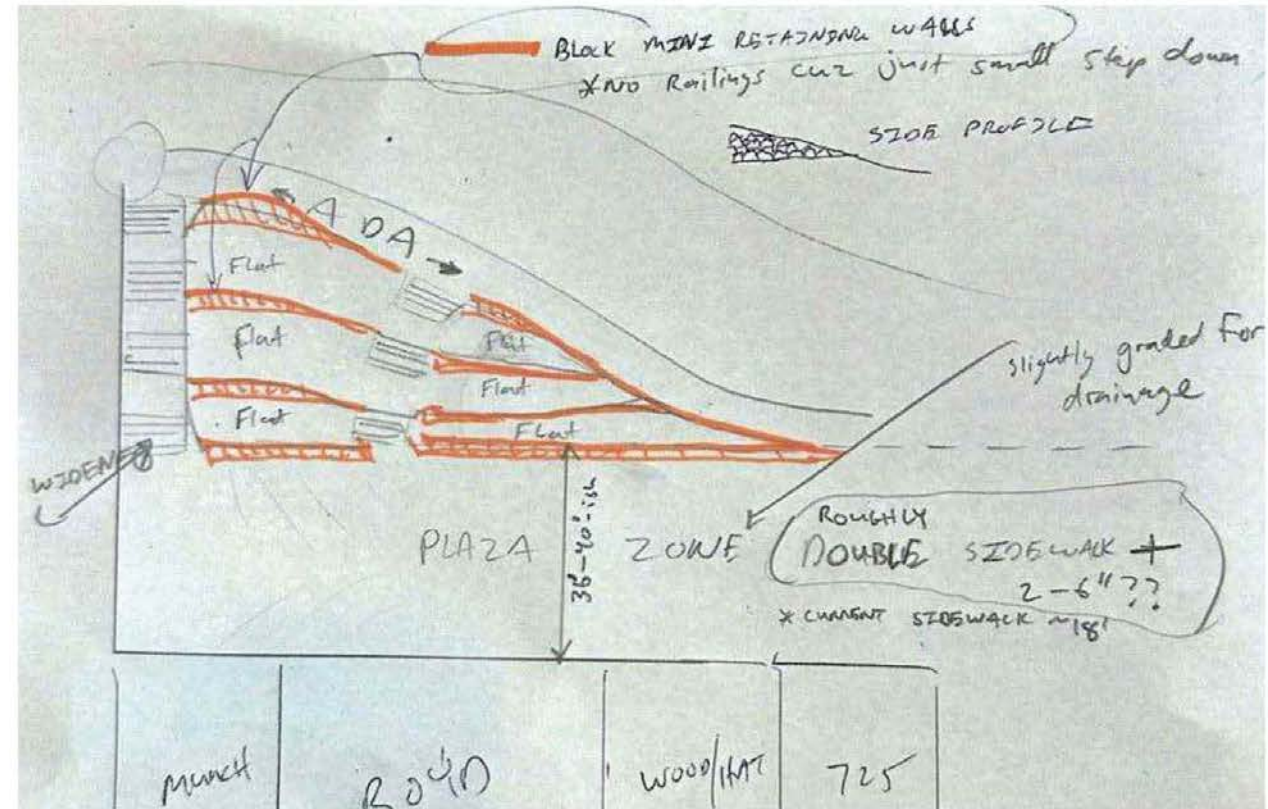
2009 DOWNTOWN MASTER PLAN

# ROYAL LADY PLAZA - 10% DESIGN

## 2016 PLAZA CONNECTIONS CONCEPTUAL LAYOUT



## Royal Lady Plaza Downtown Steering Committee Conceptual Sketch 2023



# ROYAL LADY PLAZA - 10% DESIGN



# ROYAL LADY PLAZA - 10% DESIGN



# ROYAL LADY PLAZA – 10% DESIGN



# ROYAL LADY PLAZA - 10% DESIGN



CONCEPTUAL SKETCH

# ROYAL LADY PLAZA - 10% DESIGN

## Access

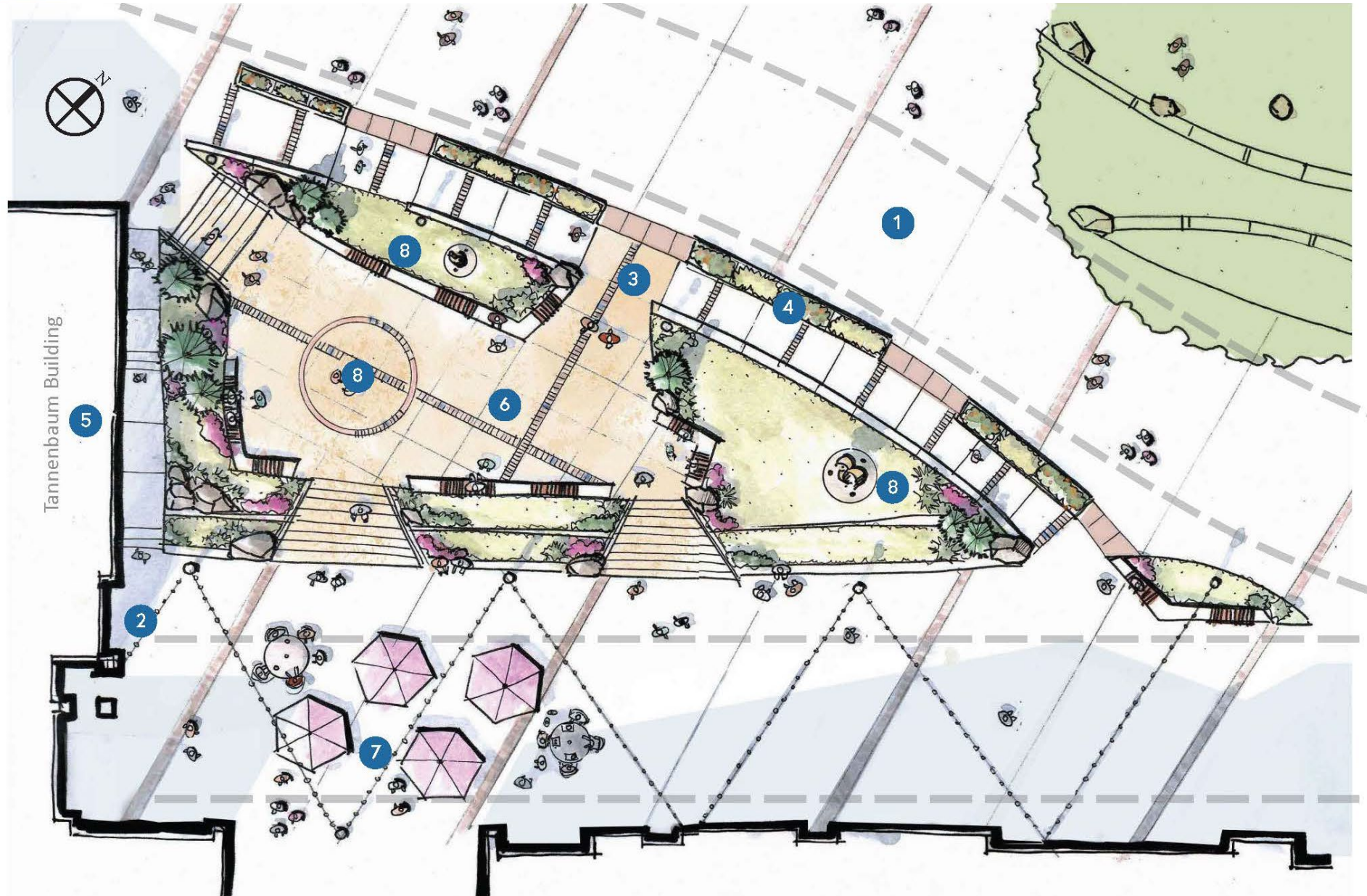
- 1 Emergency access and 20' fire truck clearance and turning movements
- 2 Business and restaurant deliveries and drop offs
- 3 8' grade change - ramps & landings allow for full ADA access

## Safety

- 4 Raised planter for grade change & safety barrier

## Attraction

- 5 Glockenspiel (hourly show)
- 6 Gathering & seating
- 7 Flexible programming for outdoor dining, umbrellas, accent lighting
- 8 Integrated placemaking elements for Royal Lady, history of glockenspiel and cultural storytelling



CONCEPTUAL PLAN



# FRONT STREET PARK – DESIGN CONSIDERATIONS

## Considerations:

- Hillside / Sledding concerns
- Lawn maintenance
- Tree succession
- Maximize programming
- Festival lighting
- Maintain Art in the Park
- Shade and seating
- Gazebo operations
- Welcome sign at Hwy 2
- Safety (bus drop, sledding kids)
- Access from Hwy 2 to Park



# FRONT STREET PARK – DESIGN CONSIDERATIONS

## Considerations:

- Hillside / Sledding concerns
- Lawn maintenance
- Tree succession
- **Maximize programming**
- Festival lighting
- Maintain Art in the Park
- Shade and seating
- Gazebo operations
- Welcome sign at Hwy 2
- Safety (bus drop, sledding kids)
- Access from Hwy 2 to Park



# FRONT STREET PARK – DESIGN CONSIDERATIONS

## Considerations:

- Hillside / Sledding concerns
- Lawn maintenance
- Tree succession
- Maximize programming
- **Festival lighting**
- **Maintain Art in the Park**
- **Shade and seating**
- Gazebo operations
- Welcome sign at Hwy 2
- Safety (bus drop, sledding kids)
- Access from Hwy 2 to Park



# FRONT STREET PARK – DESIGN CONSIDERATIONS

## Considerations:

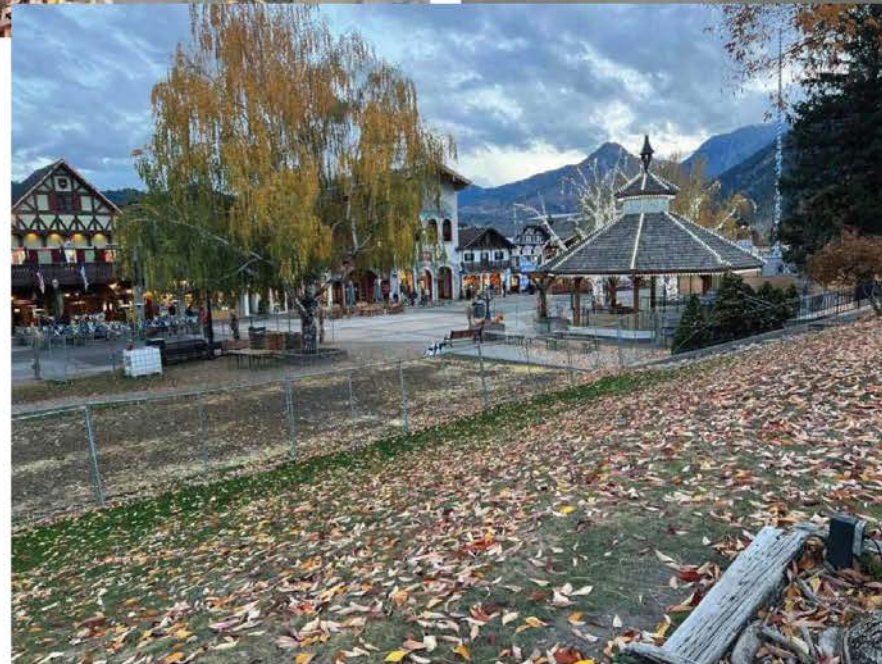
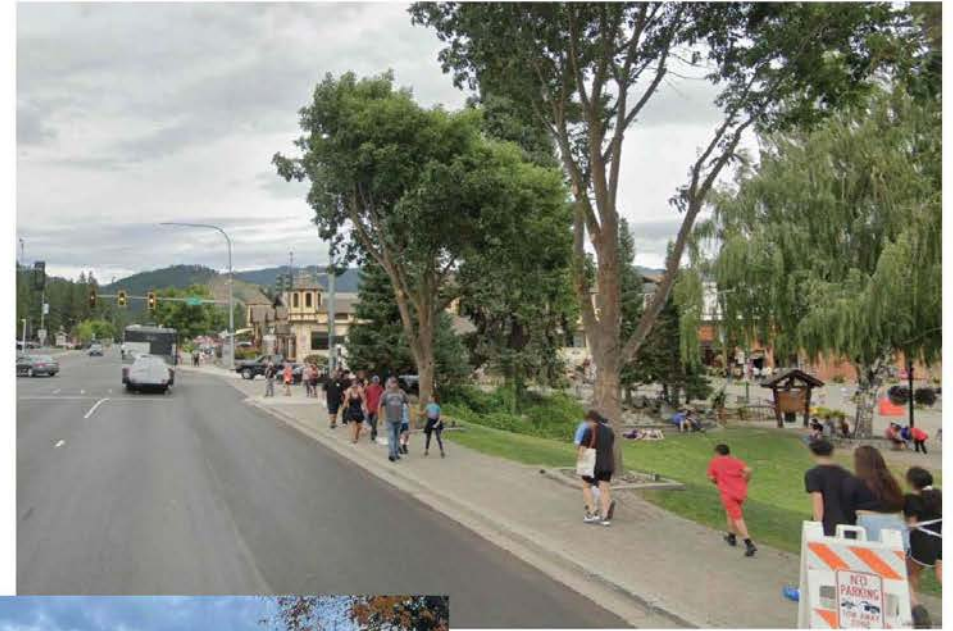
- Hillside / Sledding concerns
- Lawn maintenance
- Maximize programming
- Festival lighting
- Maintain Art in the Park
- Shade and seating
- Tree succession
- **Gazebo operations**
- Welcome sign at Hwy 2
- Safety (bus drop, sledding kids)
- Access from Hwy 2 to Park



# FRONT STREET PARK – DESIGN CONSIDERATIONS

## Considerations:

- Hillside / Sledding concerns
- Lawn maintenance
- Maximize programming
- Festival lighting
- Maintain Art in the Park
- Shade and seating
- Tree succession
- Gazebo operations
- **Welcome sign at Hwy 2**
- **Safety (bus drop, sledding kids)**
- **Access from Hwy 2 to Park**





# FRONT STREET PARK – PUBLIC ENGAGEMENT

## COMMUNITY ENGAGEMENT NIGHT

---



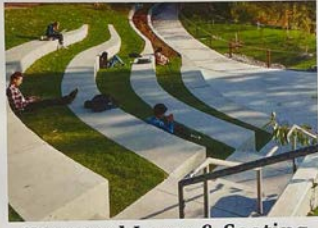
# FRONT STREET PARK - PUBLIC ENGAGEMENT

## Park Feature Preference

Of the five plaza features shown, please rank your top three preferred features for the park using the colored dots provided:



Snow Play Area



Terraced Lawn & Seating



Ice Skating



## Park Feature Preference

Of the five plaza features shown, please rank your top three preferred features for the park using the colored dots provided:

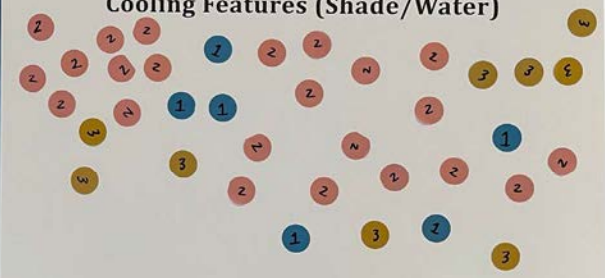
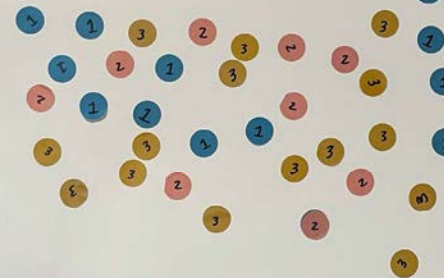


Open Lawn/Picnic Space

It's very important to have a picnic table + some shade to make it a picnic table.



Cooling Features (Shade/Water)



# FRONT STREET PARK – PUBLIC ENGAGEMENT

## ONLINE SURVEY

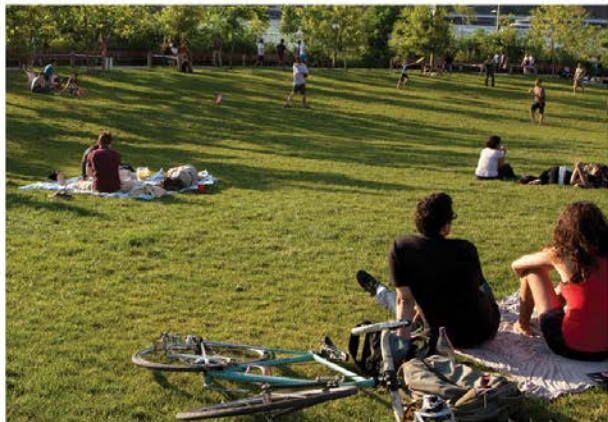
---



**Snow Play Area**



**Terraced Lawn & Seating**



**Open Lawn/Picnic Space**



**Ice Skating**



**Cooling Features (Shade/Water)**



bike parking

wayfinding signage

access from US-2 to Front St.

# accessibility

"increase accessibility...for those with mobility issues...accessibility for ALL residents and visitors"

## barriers for safety

smooth/level paving surfaces

public space for eating... tables

memories of sledding

improve safety of snowplay

smaller, intimate areas

# events &

make gazebo more inviting

# programming

"versatile spaces that can be utilized year-round... maximize enjoyment for all"

grass maintenance

space for live music

SCULPTURE

# SHADE

green space

seating

public art

dog amenities

durable materials

# site amenities

fountains

lawn

fire pit

honor Royal Ladies

continue/enhance

Native American storytelling

Bavarian & Alpine

agriculture

theme

# placemaking

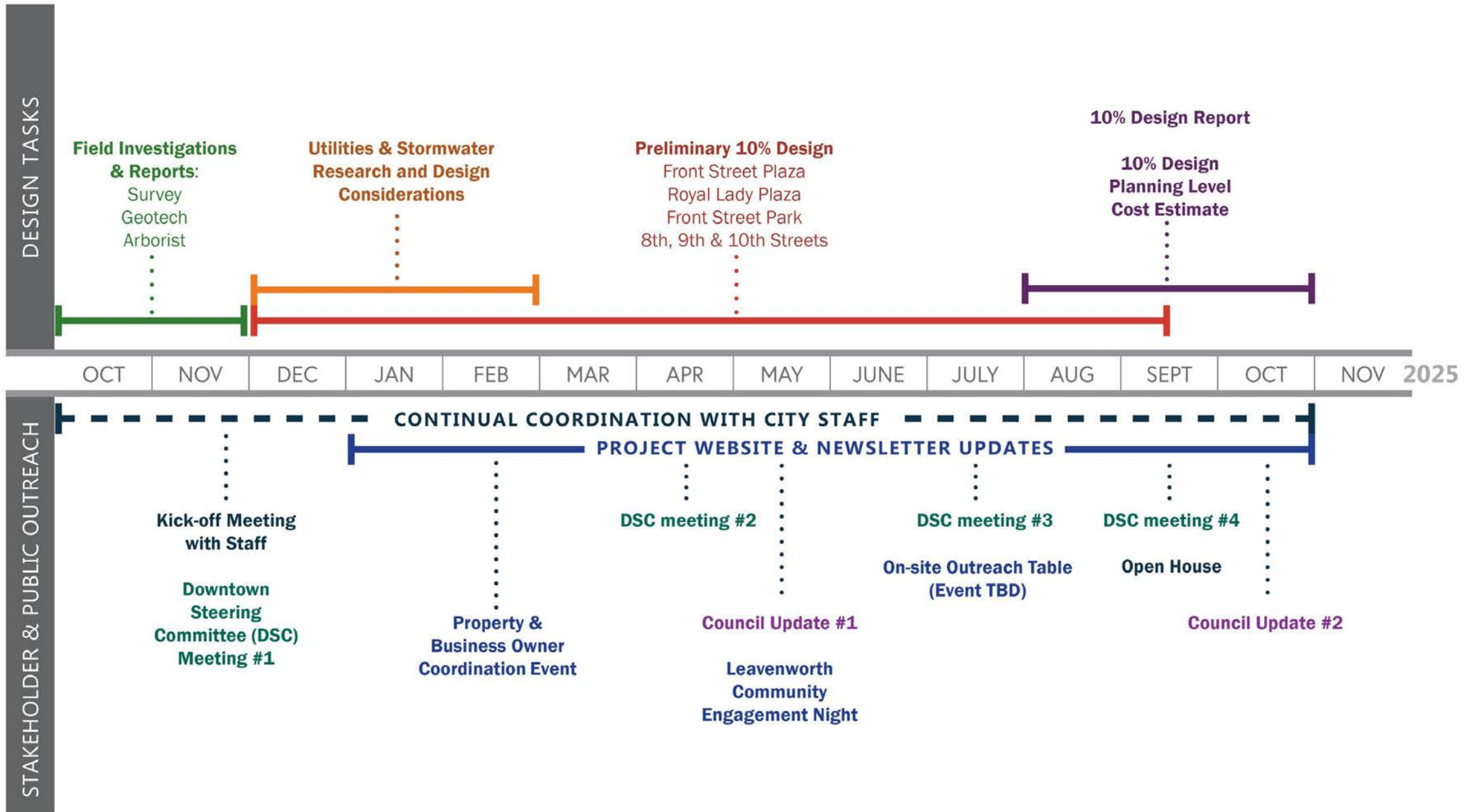
"reflect on the natural beauty of the valley with the plentiful rivers and Wenatchi Indian beginnings, evolving to logging and mining and ending with sustainable recreation for the future"

homage to project LIFE

mountaineering

"I'm so excited to see this project come to life..."

# NEXT STEPS





QUESTIONS?