

Downtown Parking Study Public Open House Strategy Recommendations

August 16, 2018

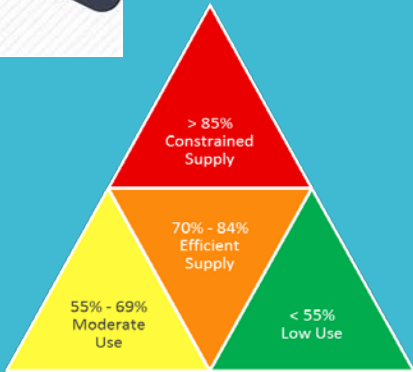


Program Format



- Introductions
- Data Findings (brief recap)
- Outline of Recommended Strategies
- Q & A
- Adjourn

Key Data Findings



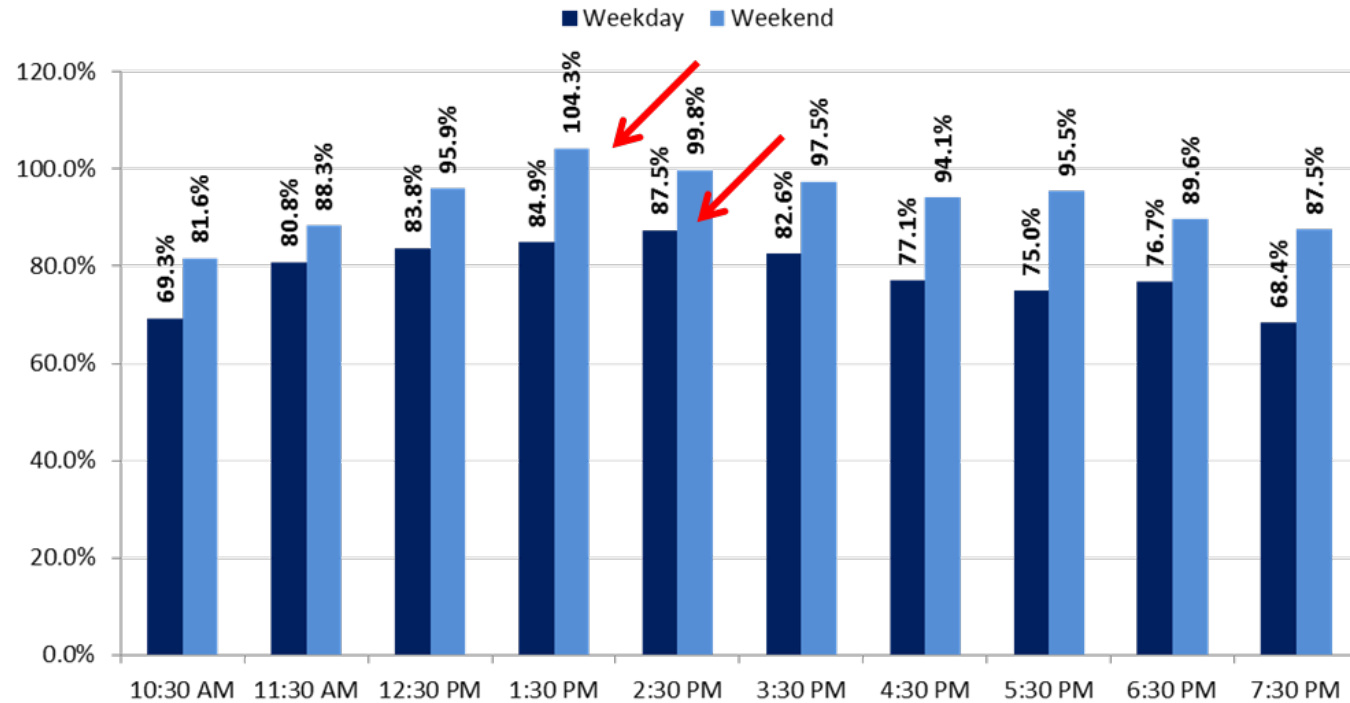
- ✓ Core Zone is heavily utilized.
- ✓ No-Limit Parking in Core is not consistent with average time stay.
 - There is no control of core
 - Consider time limits.
- ✓ Opportunity for shared parking should be pursued.
 - 401 empty stalls (peak weekend) = \$12 - \$15 million in structured replacement value.
- ✓ Remote lots and shuttle is positive add to the system.
- ✓ Up to 181 stall deficit in public parking supply.
- ✓ Begin planning for capacity growth and how to fund.

On-street performance



2017 Leavenworth Parking Utilization

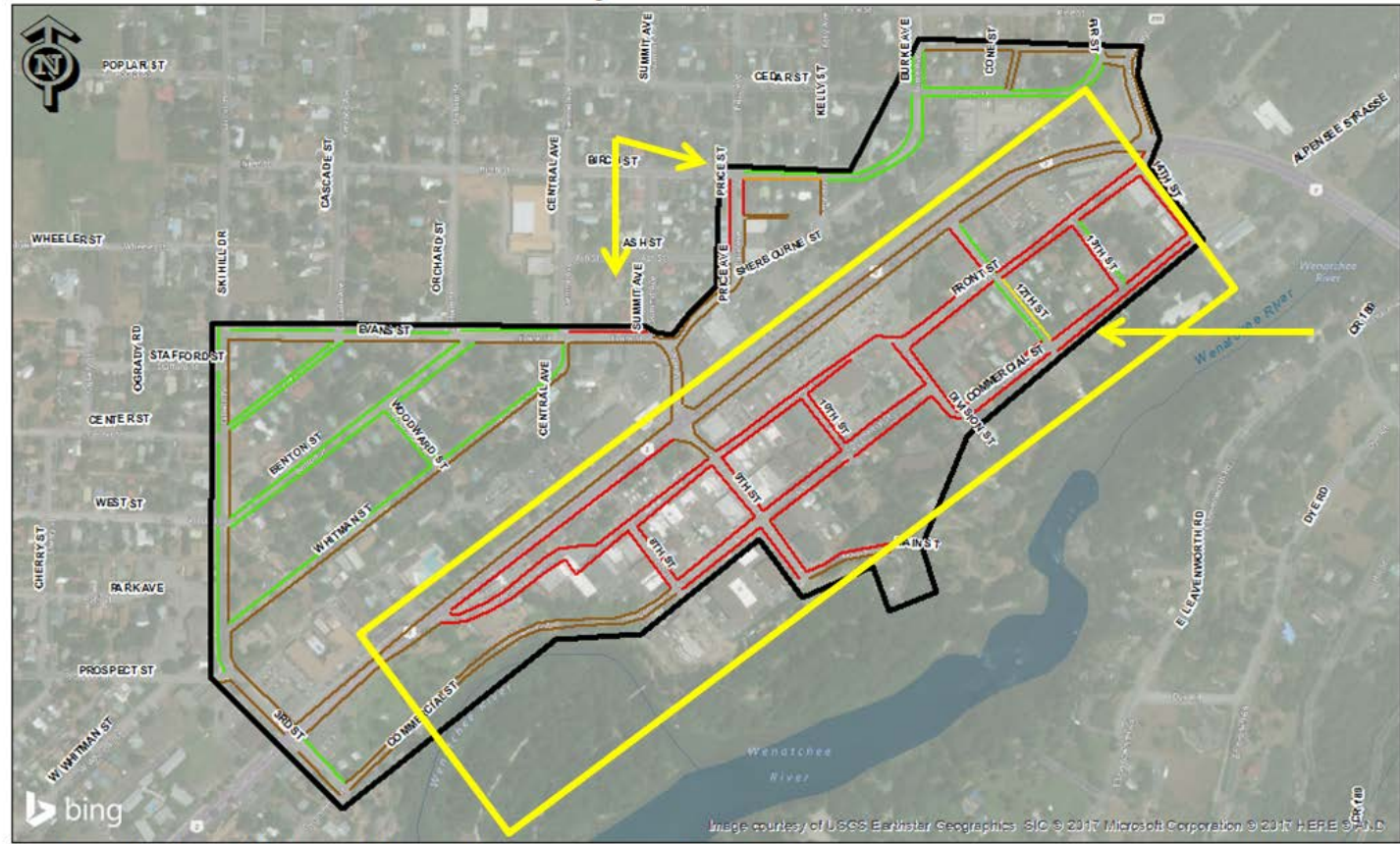
Weekday vs weekend Core Zone on-street occupancies (512 stalls)



- Maximum constraint (core weekend)
- Very robust (weekdays)
- 18% of users likely employees

On-street performance

Heat Map



On-Street Parking Utilization - Weekend

Parking Study Boundary

RICK WILLIAMS CONSULTING
Parking & Transportation

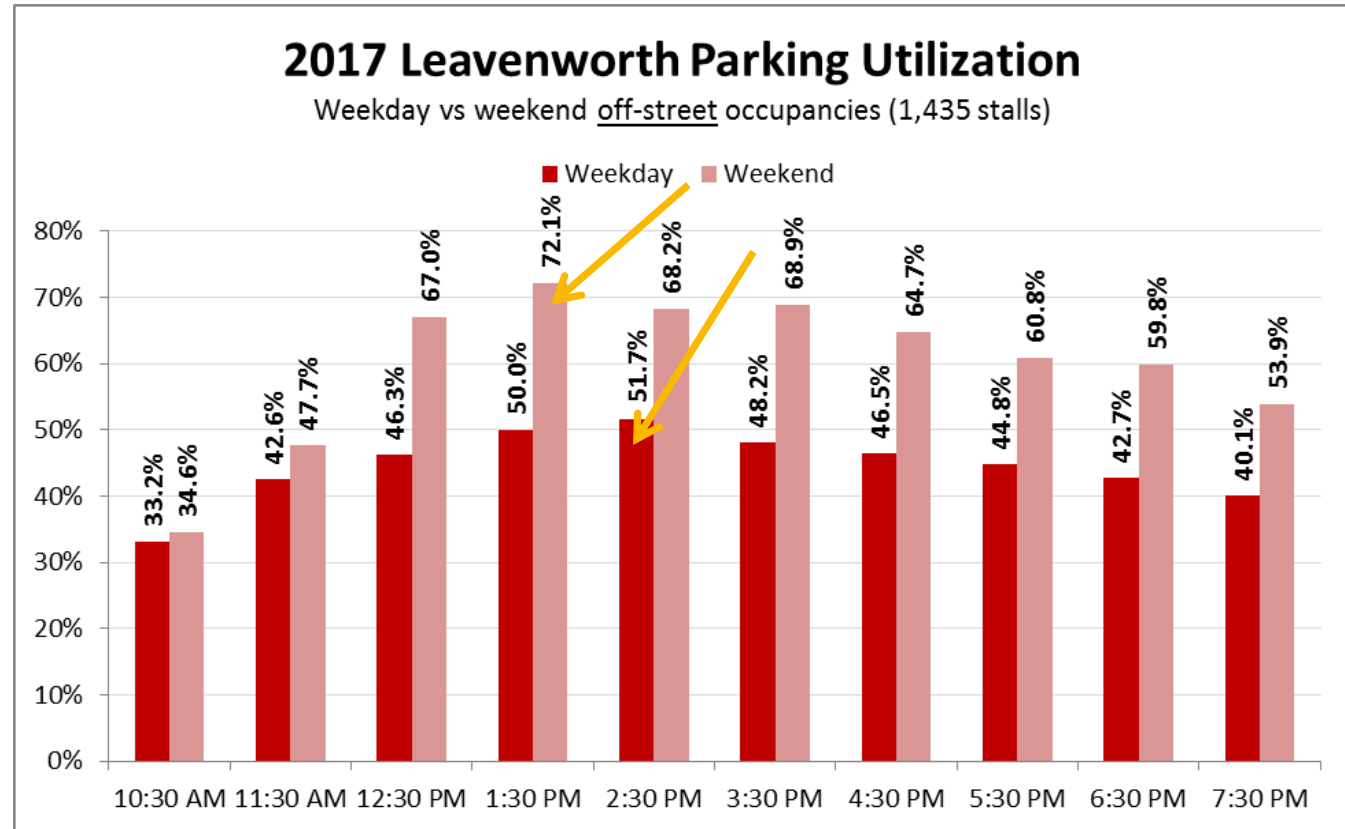
- > 85%
- 84% - 70%
- 69% - 55%
- < 55%
- Construction
- No Parking

July 22, 2017

1:00 - 2:00 PM
Peak Hour

0 110 220 440 660 880 Feet

Off-street performance

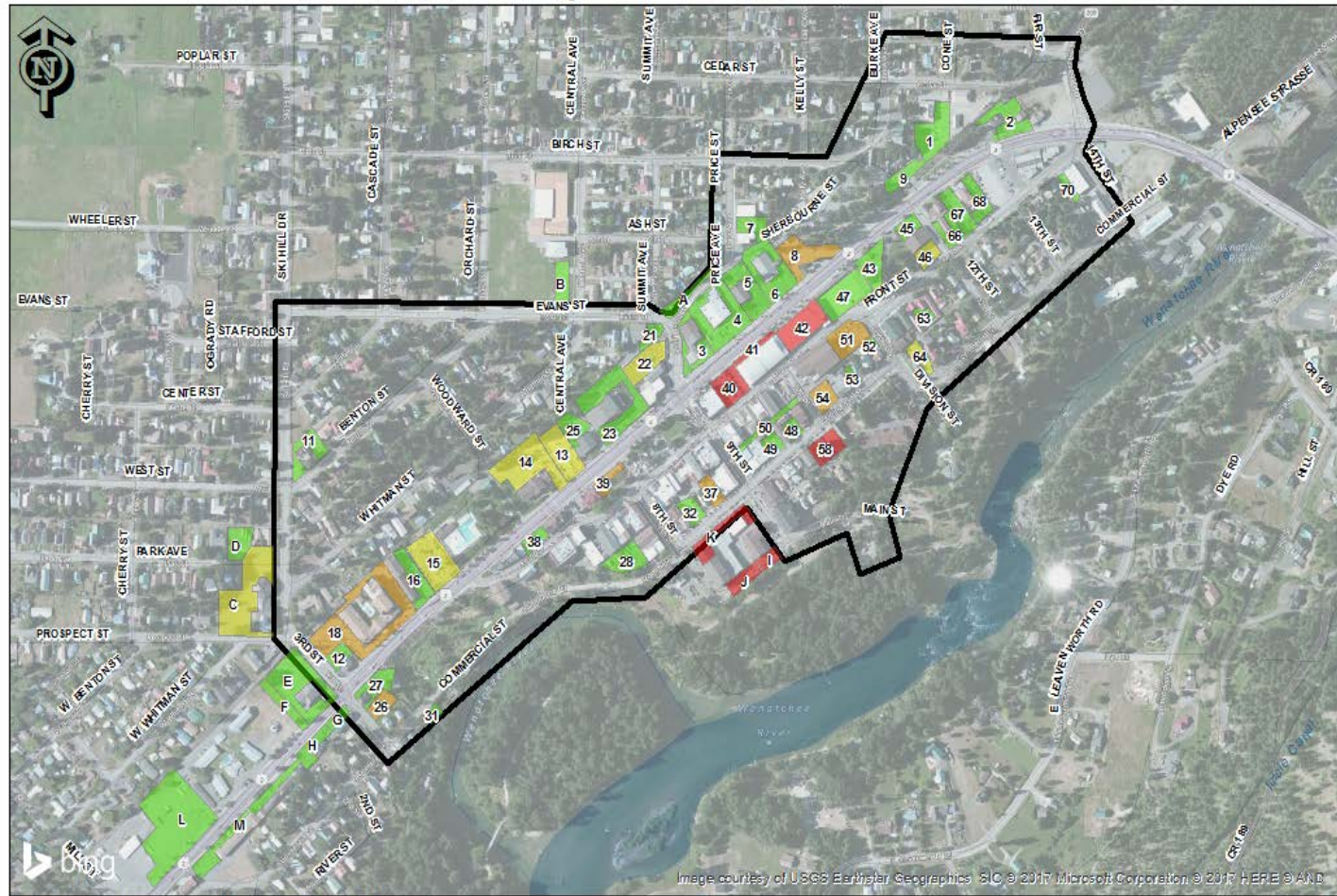


- 70 off-street lots (49 sampled)
- City lots constrained
- 65 of 70 Lots in private control

Off-street performance

Potential Shared Use Facilities

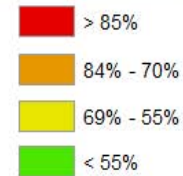
- Up to 466 (weekend) and 806 (weekday) empty stalls at peak hour off-street



Off-Street Parking Utilization - Weekday

Parking Study Boundary

RICK WILLIAMS CONSULTING
Parking & Transportation



July 20, 2017

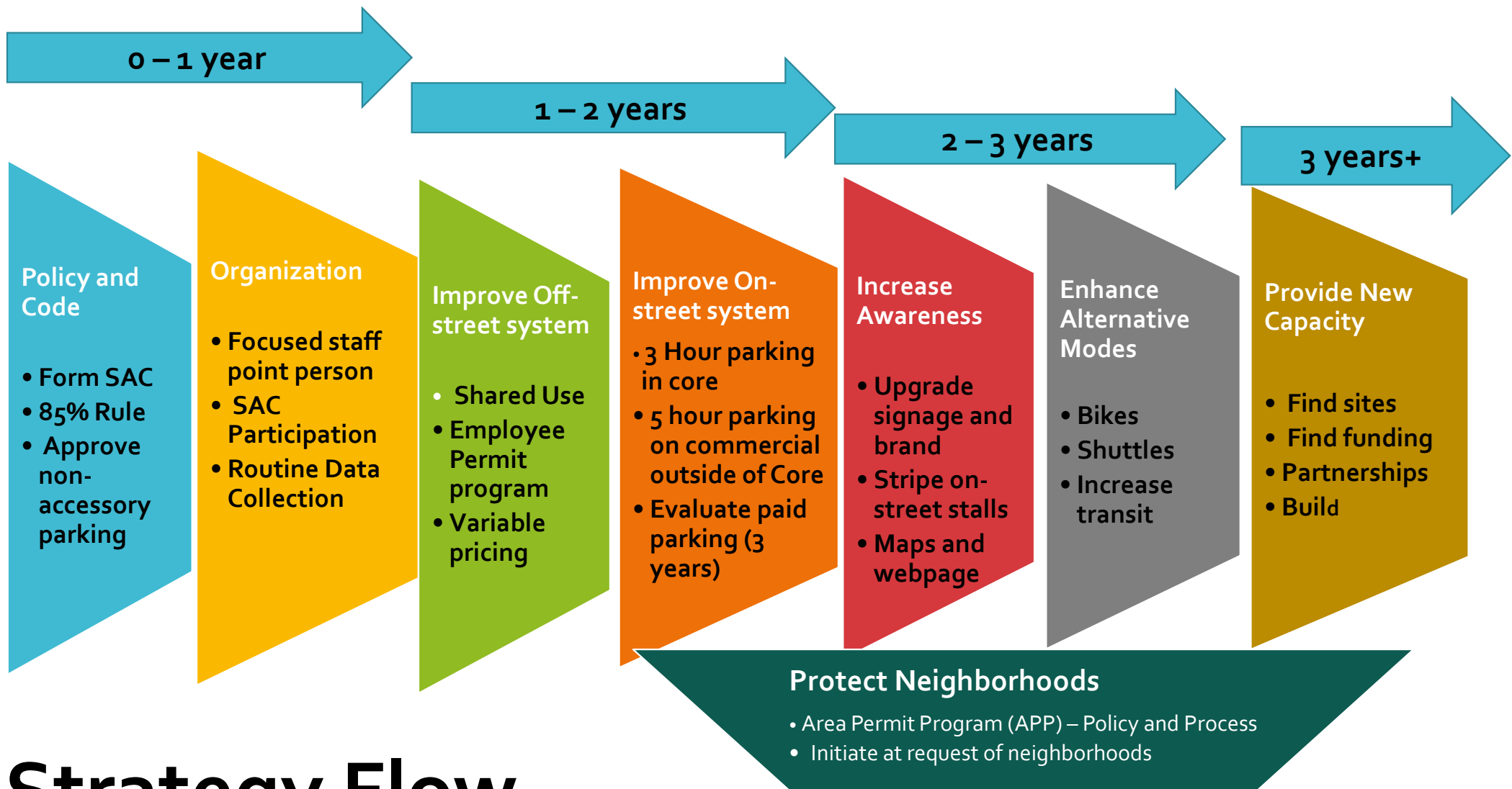
2:00 - 3:00 PM
Peak Hour

Feet
0 120 240 480 720 960

Strategy Recommendations



- 27 Recommendations
- 8 Element areas
- Provided in near, mid, and long-term formats
- Intended to be iterative (step-by-step)
- Costs provided (where feasible)
- Requires coordination and oversight beyond current status quo
- The Parking Stakeholders Group Strategy detailed plan will be available on the City's Website".



Strategy Flow

Questions and Input



Thank you!



RICK WILLIAMS CONSULTING
Parking & Transportation