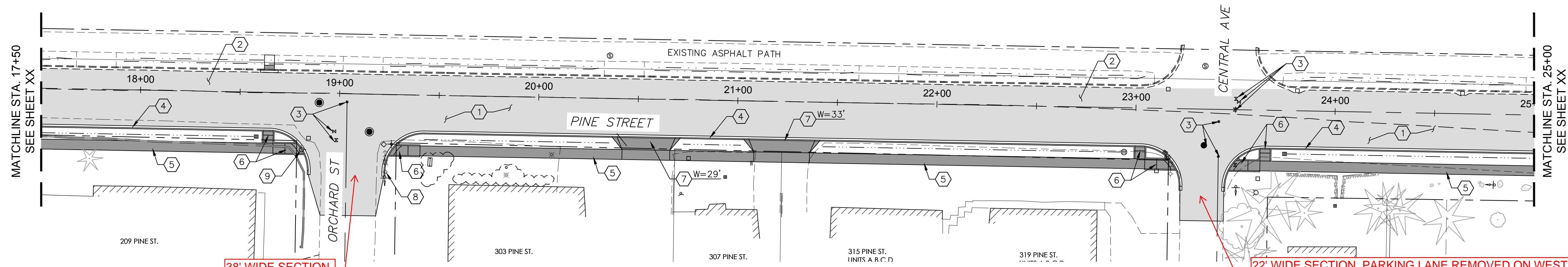


NOT FOR CONSTRUCTION



38' WIDE SECTION

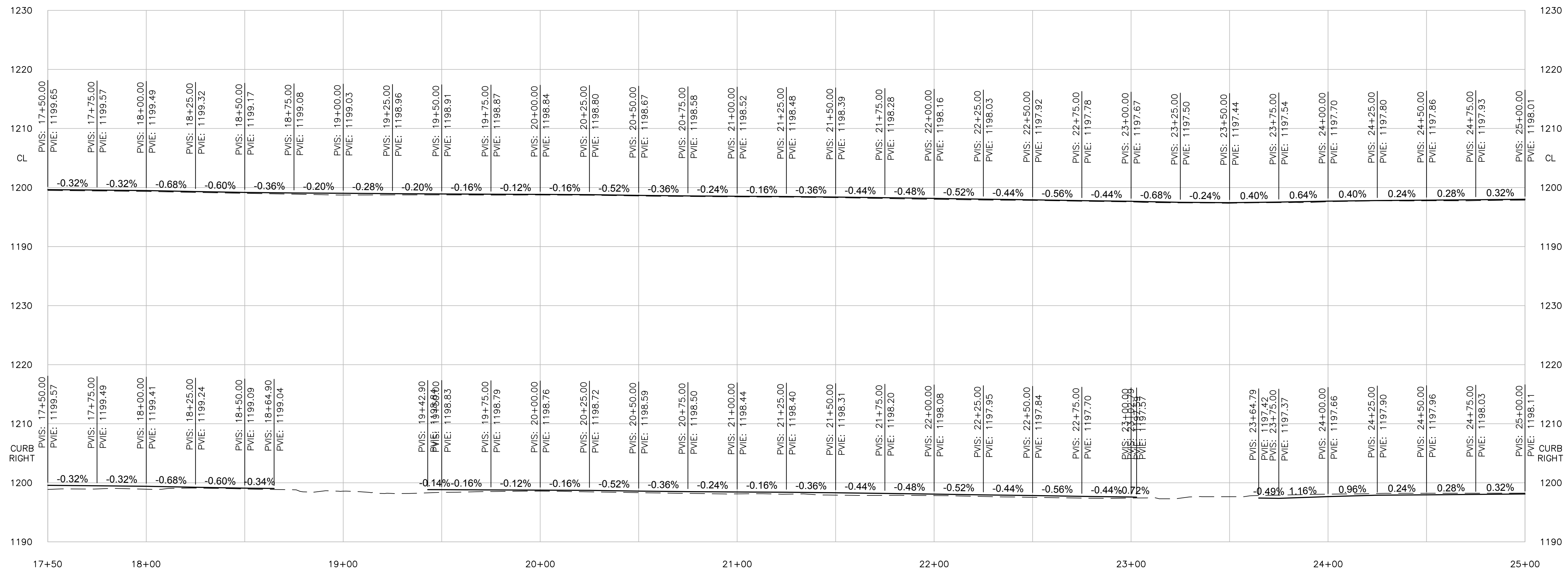
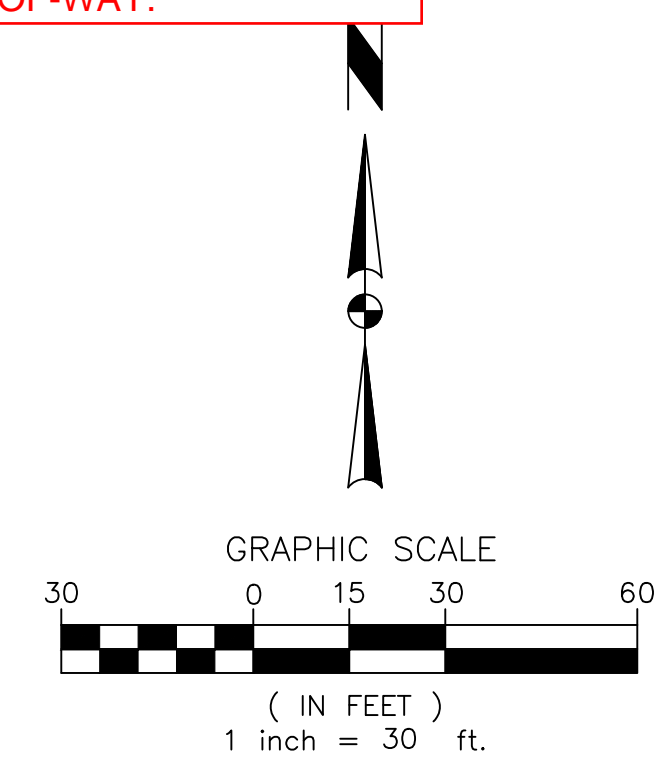
22' WIDE SECTION. PARKING LANE REMOVED ON WEST TO AVOID IMPACTING OFF-STREET PARKING. PARKING LANE ON EAST REMOVED TO AVOID LARGE TREES. IN THE FUTURE, SIDEWALK COULD BE ADDED TO THE WEST SIDE WITHIN THE CURRENT RIGHT-OF-WAY.

GENERAL NOTES

1. PROPOSED SIGNING AND STRIPING PER SHEETS XX THRU XX.
2. PROPOSED STORM DRAINAGE PER SHEETS XX THRU XX.

CONSTRUCTION NOTES

- 1 CONSTRUCT HMA ROADWAY PER SECTIONS ON SHEET 4. ASPHALT SHALL BE WSDOT HMA CL. 1/2 IN. PG 64-28.
- 2 HMA OVERLAY PER SECTIONS ON SHEET 4. ASPHALT SHALL BE WSDOT HMA CL. 1/2 IN. PG 64-28. FINISHED GRADE SHALL BE FLUSH WITH THE LIP OF CONCRETE CURB AND GUTTER.
- 3 ADJUST EXISTING STRUCTURES (MONUMENTS, WATER VALVES, SANITARY SEWER MANHOLES, ETC) TO FINISHED GRADE AS REQUIRED OR TO NOTED RIM ELEVATION. WATER VALVE ADJUSTMENTS SHALL BE PER CITY OF LEAVENWORTH DETAIL NO. W3, SEE APPENDIX C.
- 4 CEMENT CONCRETE TRAFFIC CURB AND GUTTER PER WSDOT STD PLAN F-10.12-02.
- 5 5 FOOT WIDE CEMENT CONCRETE SIDEWALK PER WSDOT STD PLAN F-30.10-03.
- 6 CEMENT CONCRETE CURB RAMP TYPE SINGLE DIRECTION 'A' PER WSDOT STANDARD PLAN F-40.16-03.
- 7 CEMENT CONCRETE DRIVEWAY ENTRANCE TYPE 3 PER WSDOT STD PLAN F-80.10-04. WIDTH PER PLAN. SEE STORM DRAINAGE PLANS, SHEET XX THRU XX FOR CULVERT INFORMATION.
- 8 CHELAN COUNTY PUD RELOCATED EXISTING POWER POLE. CONTRACTOR TO VERIFY NEW LOCATION DOES NOT CONFLICT WITH PROPOSED IMPROVEMENTS PRIOR TO CONSTRUCTION.
- 9 RELOCATE EXISTING FIRE HYDRANT PER CITY OF LEAVENWORTH DETAIL NO. W4, SEE APPENDIX C. CONTRACTOR TO COORDINATE RELOCATION WITH CITY OF LEAVENWORTH PRIOR TO CONSTRUCTION.



REV	DATE	REVISION

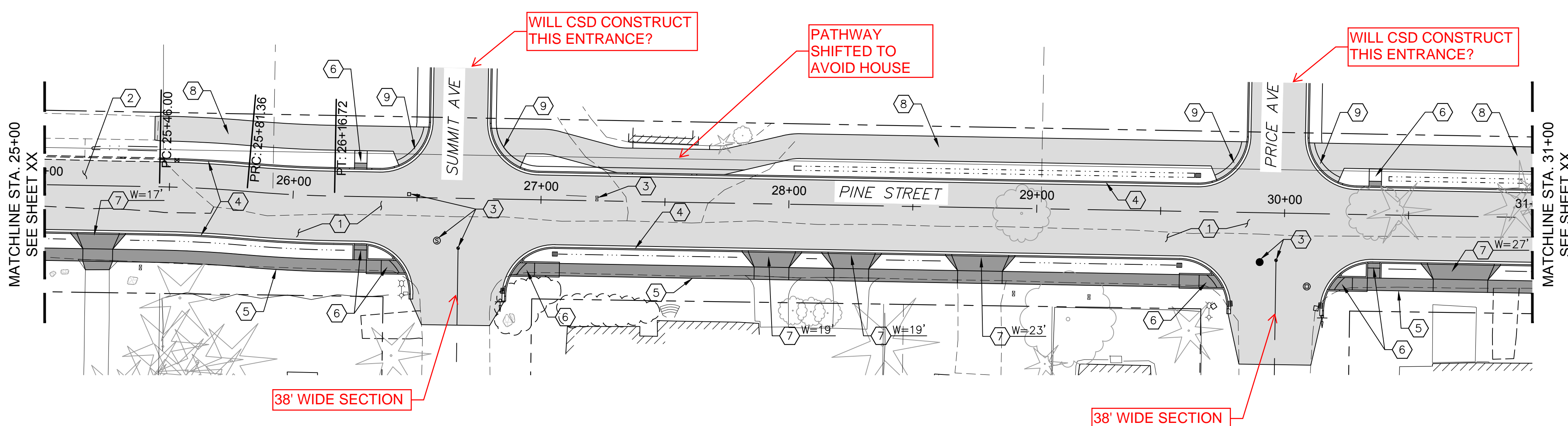
TD&H
Engineering
509.622.2888 • tdhengineering.com
303 EAST 2ND AVE. • SPOKANE, WASHINGTON 99202

DRAWN BY: JR/DW
DESIGNED BY: DNW
QUALITY CHECK: DNW
DATE: 09/06/17
JOB NO. S17-123
FIELDBOOK

PINE STREET -PHASE 1: SKI HILL DR. TO TITUS RD.
LEAVENWORTH, WASHINGTON

PINE STREET PLAN AND PROFILE
STA. 17+50 TO STA. 25+00

NOT FOR CONSTRUCTION

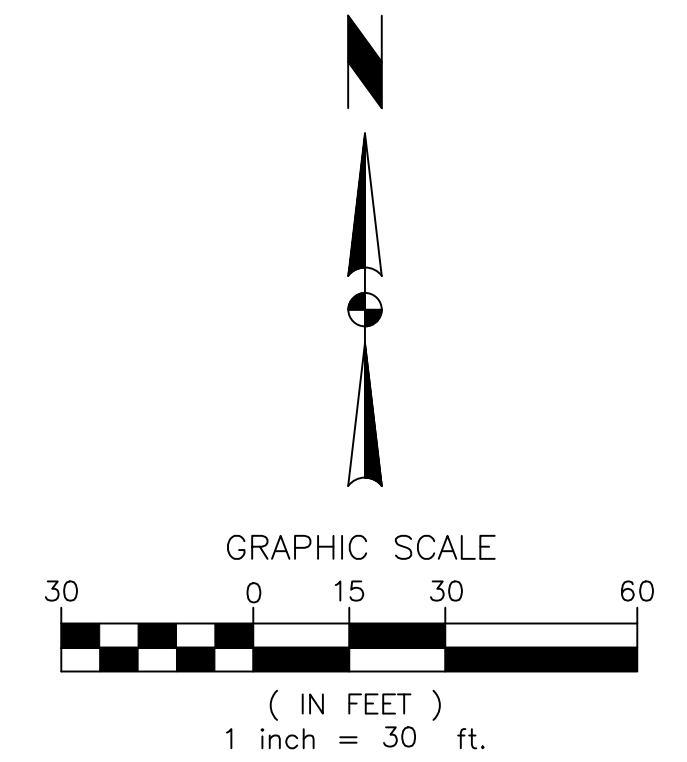
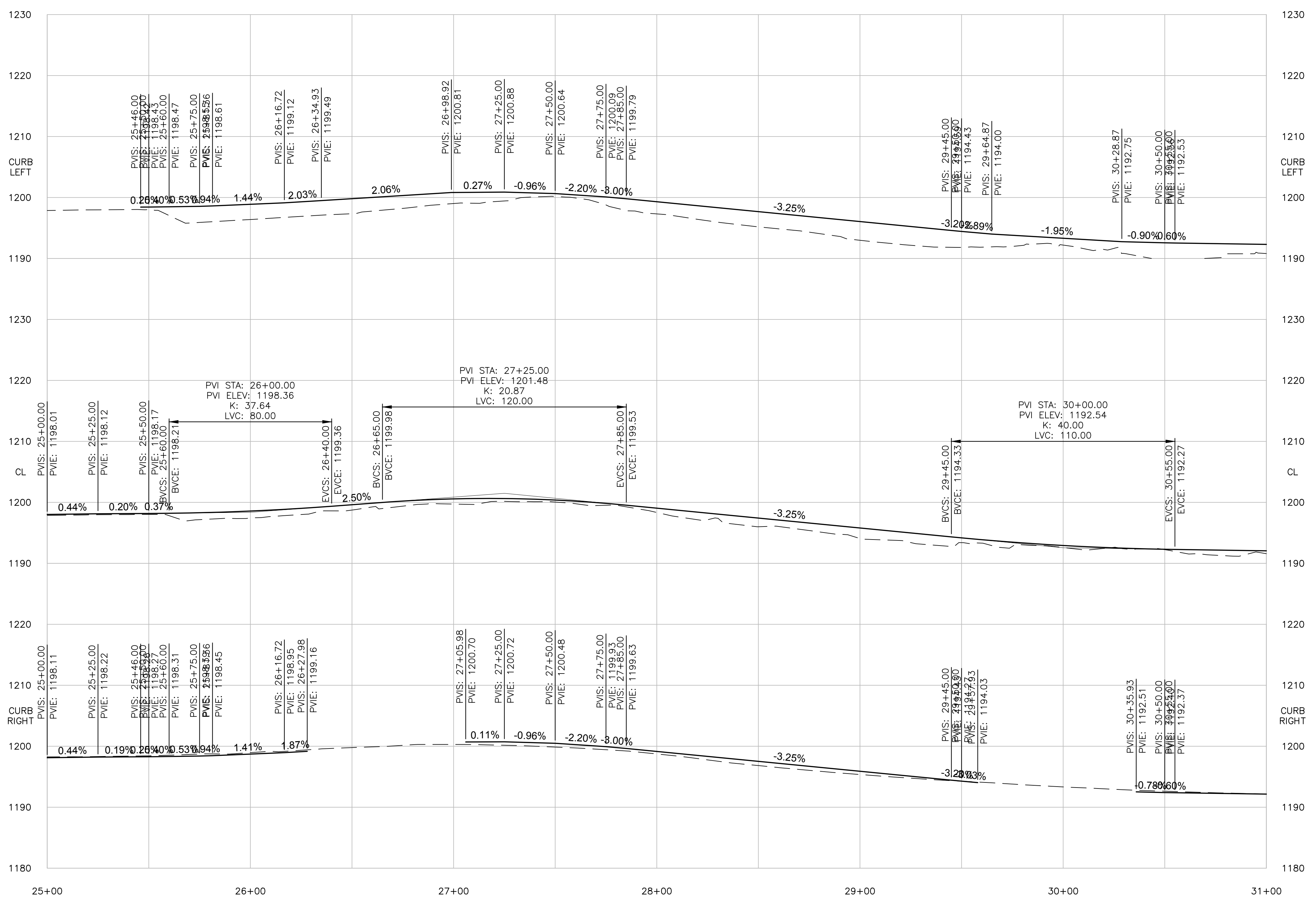


GENERAL NOTES

1. PROPOSED SIGNING AND STRIPING PER SHEETS XX THRU XX.
2. PROPOSED STORM DRAINAGE PER SHEETS XX THRU XX.

CONSTRUCTION NOTES

1. CONSTRUCT HMA ROADWAY PER SECTIONS ON SHEET 4. ASPHALT SHALL BE WSDOT HMA CL. 1/2 IN. PG 64-28.
2. HMA OVERLAY PER SECTIONS ON SHEET 4. ASPHALT SHALL BE WSDOT HMA CL. 1/2 IN. PG 64-28. FINISHED GRADE SHALL BE FLUSH WITH THE LIP OF CONCRETE CURB AND GUTTER.
3. ADJUST EXISTING STRUCTURES (MONUMENTS, WATER VALVES, SANITARY SEWER MANHOLES, ETC) TO FINISHED GRADE AS REQUIRED OR TO NOTED RIM ELEVATION. WATER VALVE ADJUSTMENTS SHALL BE PER CITY OF LEAVENWORTH DETAIL NO. W3, SEE APPENDIX C.
4. CEMENT CONCRETE TRAFFIC CURB AND GUTTER PER WSDOT STD PLAN F-10.12-02.
5. 5 FOOT WIDE CEMENT CONCRETE SIDEWALK PER WSDOT STD PLAN F-30.10-03.
6. CEMENT CONCRETE CURB RAMP TYPE SINGLE DIRECTION 'A' PER WSDOT STANDARD PLAN F-40.16-03.
7. CEMENT CONCRETE DRIVEWAY ENTRANCE TYPE 3 PER WSDOT STD PLAN F-80.10-04. WIDTH PER PLAN. SEE STORM DRAINAGE PLANS, SHEET XX THRU XX FOR CULVERT INFORMATION.
8. 10 FOOT WIDE ASPHALT PATH PER DETAIL X, SHEET XX. ASPHALT SHALL BE WSDOT HMA CL. 1/2 IN. PG 64-28.
9. DETECTABLE WARNING SURFACE PER WSDOT STD PLAN F-45.10-02.



REV	DATE	REVISION

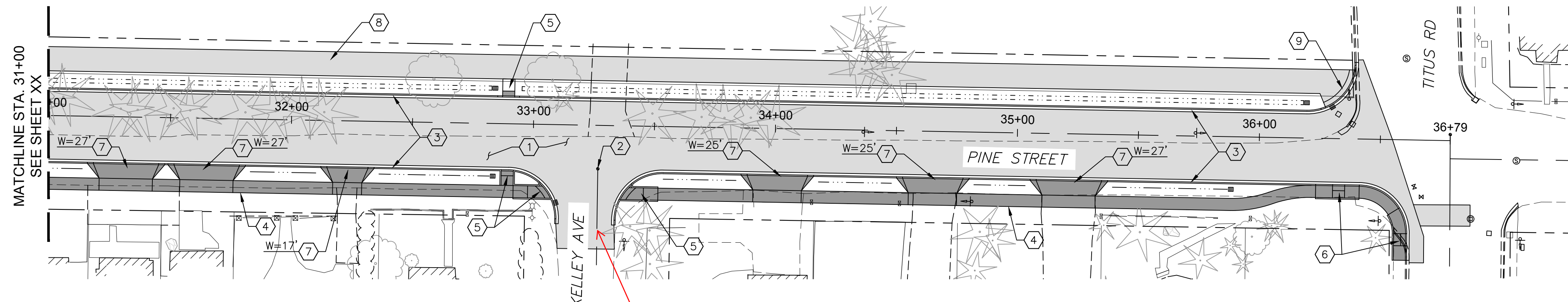
TD&H Engineering
 506.622.2888 • tdhengineering.com
 303 EAST 2ND AVE., SPOKANE, WASHINGTON 99202

DRAWN BY: JR/DW
 DESIGNED BY: DNW
 QUALITY CHECK: DNW
 DATE: 09/06/17
 JOB NO. S17-123
 FIELDBOOK

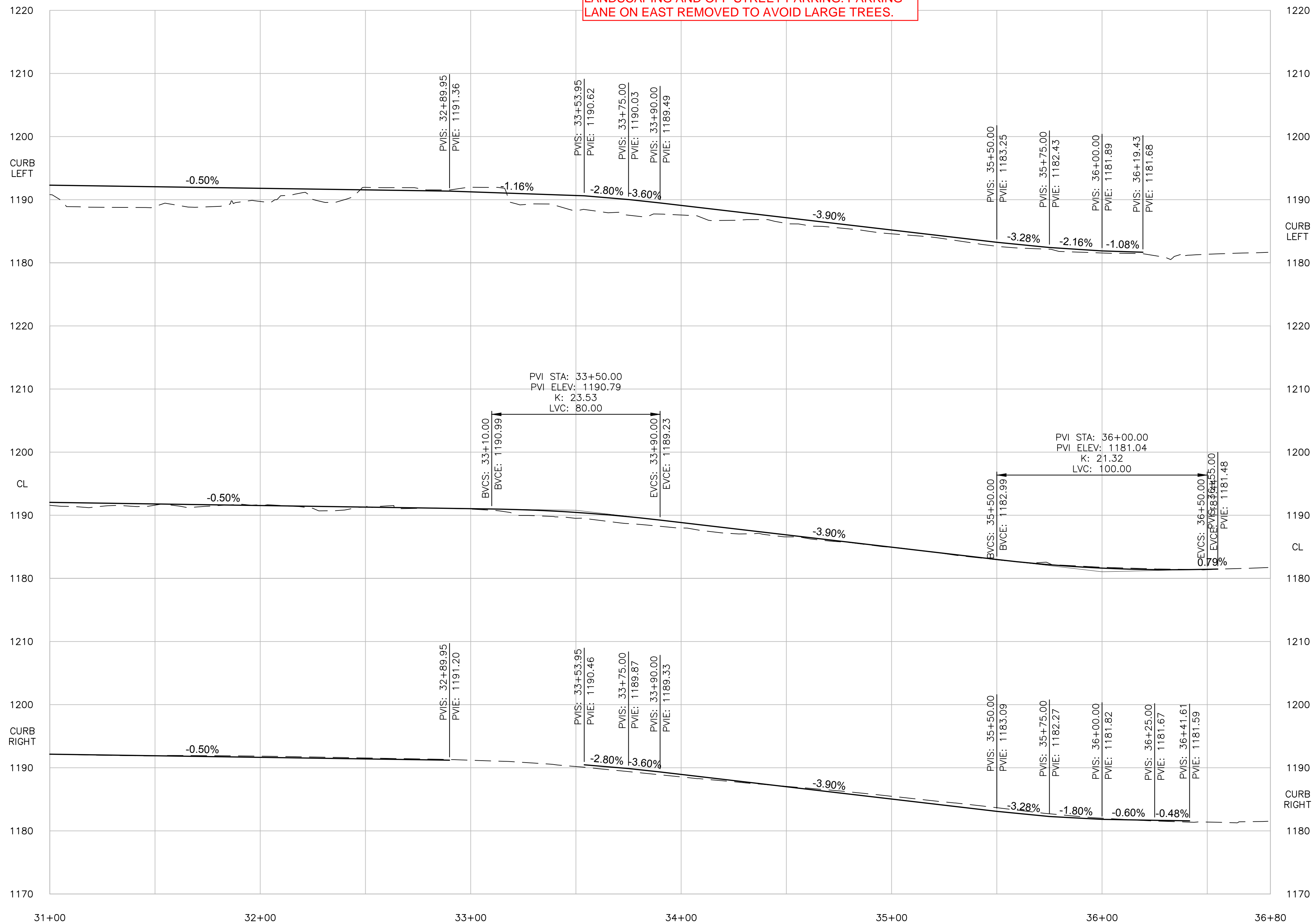
**PINE STREET -PHASE 1: SKI HILL DR. TO TITUS RD.
 LEAVENWORTH, WASHINGTON**

**PINE STREET PLAN AND PROFILE
 STA. 25+00 TO STA. 31+00**

NOT FOR CONSTRUCTION



24' WIDE SECTION TO MATCH EXISTING WIDTH. PARKING LANE REMOVED ON WEST TO AVOID LANDSCAPING AND OFF-STREET PARKING. PARKING LANE ON EAST REMOVED TO AVOID LARGE TREES.



GENERAL NOTES

1. PROPOSED SIGNING AND STRIPING PER SHEETS XX THRU XX.
2. PROPOSED STORM DRAINAGE PER SHEETS XX THRU XX.

CONSTRUCTION NOTES

- 1 CONSTRUCT HMA ROADWAY PER SECTIONS ON SHEET 4. ASPHALT SHALL BE WSDOT HMA CL. 1/2 IN. PG 64-28.
- 2 ADJUST EXISTING STRUCTURES (MONUMENTS, WATER VALVES, SANITARY SEWER MANHOLES, ETC) TO FINISHED GRADE AS REQUIRED OR TO NOTED RIM ELEVATION. WATER VALVE ADJUSTMENTS SHALL BE PER CITY OF LEAVENWORTH DETAIL NO. W3, SEE APPENDIX C.
- 3 CEMENT CONCRETE TRAFFIC CURB AND GUTTER PER WSDOT STD PLAN F-10.12-02.
- 4 5 FOOT WIDE CEMENT CONCRETE SIDEWALK PER WSDOT STD PLAN F-30.10-03.
- 5 CEMENT CONCRETE CURB RAMP TYPE SINGLE DIRECTION 'A' PER WSDOT STANDARD PLAN F-40.16-03.
- 6 CEMENT CONCRETE CURB RAMP TYPE PARALLEL 'A' PER WSDOT STANDARD PLAN F-40.12-03.
- 7 CEMENT CONCRETE DRIVEWAY ENTRANCE TYPE 3 PER WSDOT STD PLAN F-80.10-04. WIDTH PER PLAN. SEE STORM DRAINAGE PLANS, SHEET XX THRU XX FOR CULVERT INFORMATION.
- 8 10 FOOT WIDE ASPHALT PATH PER DETAIL X, SHEET XX. ASPHALT SHALL BE WSDOT HMA CL. 1/2 IN. PG 64-28.
- 9 DETECTABLE WARNING SURFACE PER WSDOT STD PLAN F-45.10-02.

REV	DATE	REVISION

TD&H
Engineering
509.622.2888 • tdhengineering.com
303 EAST 2ND AVE., SPOKANE, WASHINGTON 99202

DRAWN BY: JR/DW
DESIGNED BY: DNW
QUALITY CHECK: DNW
DATE: 09/06/17
JOB NO. S17-123
FIELDBOOK

**PINE STREET -PHASE 1: SKI HILL DR. TO TITUS RD.
LEAVENWORTH, WASHINGTON**

**PINE STREET PLAN AND PROFILE
STA. 31+00 TO STA. 36+79**

